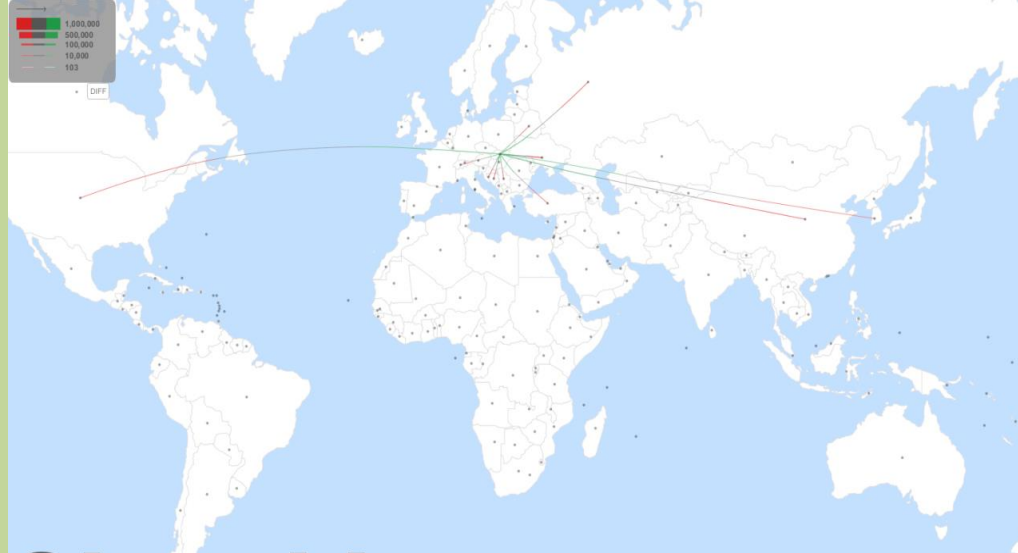


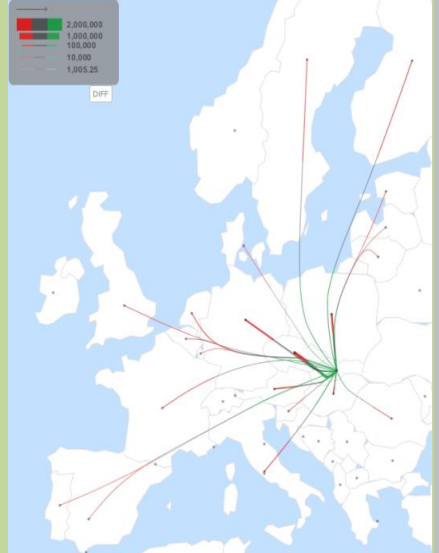
## Slovakia

2012

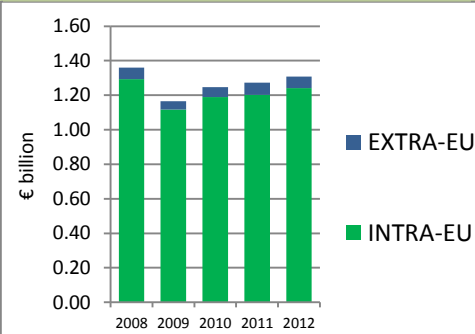
2012 imports of EUTR regulated timber products<sup>1</sup> (€ 1000): (a) From outside the EU



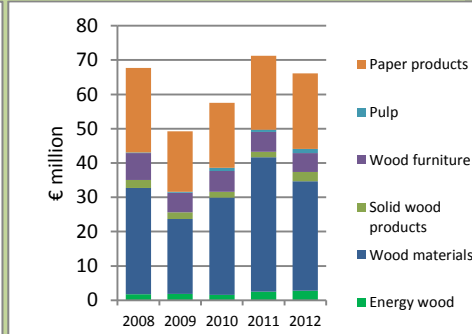
(b) From inside the EU



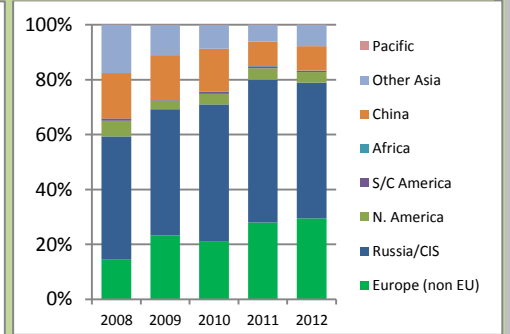
Total imports from inside and outside the EU<sup>2</sup>



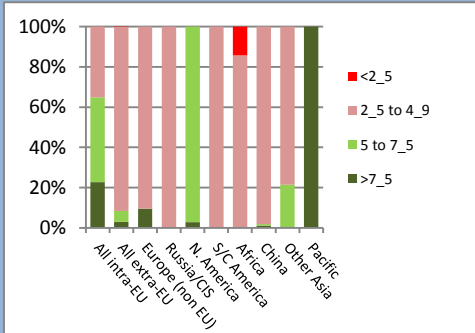
Imports from outside the EU by product<sup>3</sup>



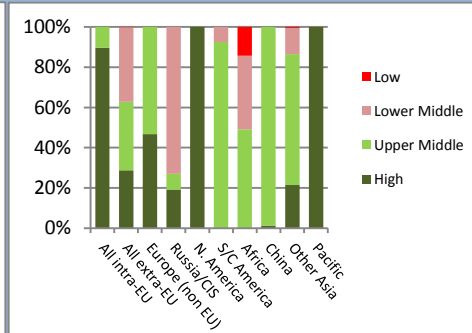
Imports from outside the EU by supply region<sup>4</sup>



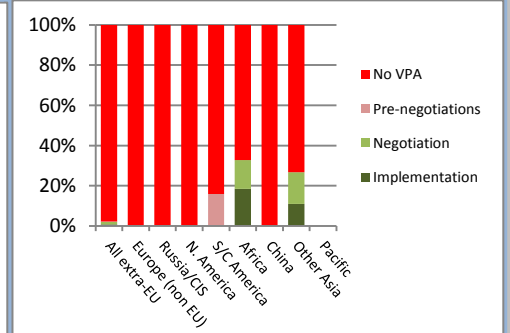
Proportion of 2012 import value by Corruption Perceptions Index (CPI)<sup>5</sup>  
Scale: 0=most corrupt, 10=least corrupt



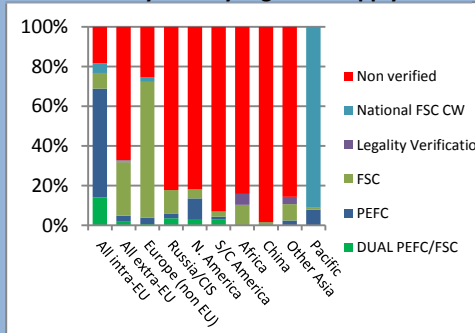
Proportion of 2012 import value by World Bank Income Group<sup>6</sup>



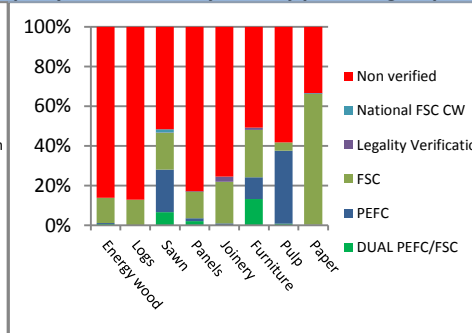
Proportion of 2012 import value from regions outside the EU by FLEGT VPA status<sup>7</sup>



% "exposure" of 2012 imports to 3rd party certification system by region of supply<sup>8</sup>



% "exposure" of 2012 extra-EU imports to 3rd party certification system by product group<sup>9</sup>



■ Detailed notes in accompanying *Snapshot\_notes.pdf*  
 ■ Data includes all timber products within the scope of the EU Timber Regulation (EUTR).  
 ■ Prepared by Rupert Oliver, Forest Industries Intelligence Ltd, based on analysis of Eurostat trade & UN/FAO production data.  
 ■ Maps prepared using jflowmap tool. See: <http://code.google.com/p/jflowmap/>  
 ■ In the absence of detailed data on trade flows of certified timber products, "level of exposure" to 3rd party certification is estimated from FSC, PEFC and other independent sources of data on national area of certified forest in timber supplying countries (e.g. if 40% of forest area in a country is certified then exposure for all timber imported from that country is 40%)  
 ■ Part of a market monitoring project of the European Timber Trade Federation (ETTF) and Timber Trade Action Plan (TTAP)  
 ■ Supported by the UK Department for International

**Slovakia**

**2012**

	Overall supply from domestic production and imports <sup>10</sup>	Imports from outside the EU by region of supply <sup>11</sup>	Imports from outside the EU by Corruption Perceptions Index <sup>12</sup>
<b>Logs<sup>13</sup></b>			
<b>Sawn<sup>14</sup></b>			
<b>Panels<sup>15</sup></b>			
<b>Joinery<sup>16</sup></b>			
<b>Furniture<sup>17</sup></b>			
<b>Pulp<sup>18</sup></b>			
<b>Paper<sup>19</sup></b>			